

AYRO™ HT *Plus*

COUNTERTOP WATER FILTRATION SYSTEM WITH ALKALINE MINERALS AND ANTIOXIDANTS



OWNER'S
MANUAL
AND
INSTALLATION
INSTRUCTIONS

HTDWG+

HTDWB+

HTDWC+

HTDWW+

HTDBB+

HTDBC+

Remedy
Harmless.
Soak the pan in vinegar and hot water or you may purchase the cleaning agent from your local dealer.
Replace the alkaline antioxidant filter cartridge

TROUBLESHOOTING TIPS:

Problem	Possible Causes
White particles in heated/hot alkaline antioxidant water.	Harmless calcium minerals dissolved in the water from heating.
White particles adhere to the cup, pan, jar and boiling pot.	Harmless calcium minerals dissolved in the water from heating.
The pH value of alkaline antioxidant water has dropped.	Alkaline antioxidant filter is no longer generating alkaline antioxidant water.

CONTENTS

SAFETY INSTRUCTIONS	2
PARTS INCLUDED	4
ASSEMBLING PARTS	6
	7
INSTALLATION INSTRUCTIONS	8
	12
FILTER LIFE	13
CONSUMER SUPPORT	14
	17

**WARNING**

FOR YOUR SAFETY, ALL THE INFORMATION IN THIS MANUAL MUST BE FOLLOWED TO MINIMIZE THE RISK OF PROPERTY DAMAGE OR PERSONAL INJURY.

SAFETY PRECAUTIONS

- For drinking water applications, do not use with water that is microbiologically unsafe or of unknown quality.
- Do not use with a hot water supply. (Operating temperature = 40-125°F)
- Actual performance results may vary based on the level of organic contaminants in the water; changes in pH and upon other conditions that may be encountered during actual use.
- The applicable water pressure must be between 30-75psi. Pressure under 30 psi may result in slow delivery of alkaline antioxidant water. Use of water pressure over 75 psi will damage your unit.
- It is recommended not to let water sit in the unit for extended periods of time without it being used.
- After prolonged periods of non-use (such as during a vacation) flush the unit thoroughly for 10 minutes before drinking.

Remedy

Allow water to run through the unit for approximately 3-5 minutes to flush the filter and charge the carbon.

Will go away after water runs for a while.

Replace the filter cartridge.

- Increase water flow by adjusting the faucet.
- Applicable water pressure must be minimum of 30 psi. Increase the water pressure by using pressure pump.
- High sediment levels can cause premature clogging, replace the filter cartridge. Please refer to filter life section on page 13.

Read the installation instructions thoroughly and reinstall the unit.

TROUBLESHOOTING TIPS:

Problem	Possible Causes
Water contains tiny black particles.	Harmless carbon powder.
Water has air bubbles and is cloudy.	Air in the system after installation.
Chlorine taste and/or odor in filtered water.	Carbon block filter is no longer removing chlorine from water supply.
Water flow rate is slow.	<ul style="list-style-type: none">- Low water flow.- Low household water pressure.- The filter, diverter screen, and/or inlet become clogged with sediments and other contaminants.
Fittings are leaking.	The unit is not installed properly.

SAFETY PRECAUTIONS

- Seek professional medical or pharmaceutical advice before using Alkaline antioxidant water if you are:
 - i. Taking medicine with alkaline water
 - ii. Experiencing Achlorhydria
 - iii. Suffering from liver or kidney disease
 - iv. Under medical or dental treatment
- Seek professional medical advice if you feel alkaline antioxidant water is causing any adverse effects.
- To drink alkaline antioxidant water as is, make sure not to exceed pH 9.5. It is also important to check the pH of the water regularly with a pH test solution.
- Do not keep pet fish in the water from Ayro HT plus.
- Do not use a copper water container as it is highly reactive with acid or an aluminum water container as it is highly reactive with the base. Failure to observe this warning may damage the water container.

- 1 Countertop spout
- 2 Tubing
- 3 Faucet aerator/diverter
- 4 Barb elbow
- 5 Adapter
- 6 Filter bases
- 7 Filter locking rings
- 8 Filters

IMPORTANT	Always flush the new filter cartridge prior to drinking by first running water through AYRO™ HT Plus for at least 3-5 minutes.
------------------	---

NOTE	For optimum performance, the filter cartridge must be replaced on a regular basis. Filtering capacity may vary depending on local water conditions and water volume used.
-------------	---

FILTER LIFE	Filter life will vary in proportion to the amount of water used and the level of impurities in the water being processed. Claims of capacity are not applicable to contaminants reduced by mechanical filtration because of broad variations in the quality and quantity of physical matter in local water supply. It is essential that the filter is replaced on a regular schedule basis as follows: (i) every 4-6 months of sediment pre-filter use and every 6-12 months of alkaline antioxidant filter use (ii) when the water flow diminishes (iii) when the alkalinity diminishes (iv) the filter becomes saturated with bad tastes and odors.
--------------------	---

CONNECTION TO FAUCET

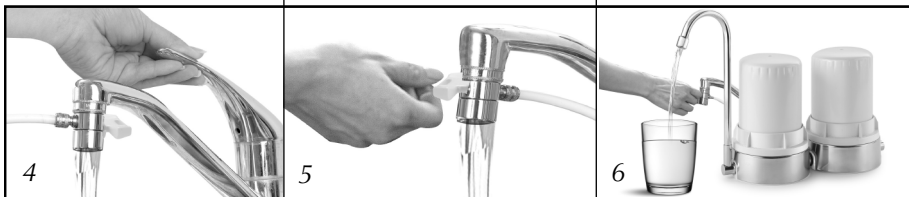


OR

Unscrew the kitchen faucet aerator with a pair of pliers and remove the old washer if it is still attached to the faucet.

Install the supplied aerator/diverter with tubing attached. The unit comes with a chrome/brushed stainless diverter suitable for most common type male threaded aerator.

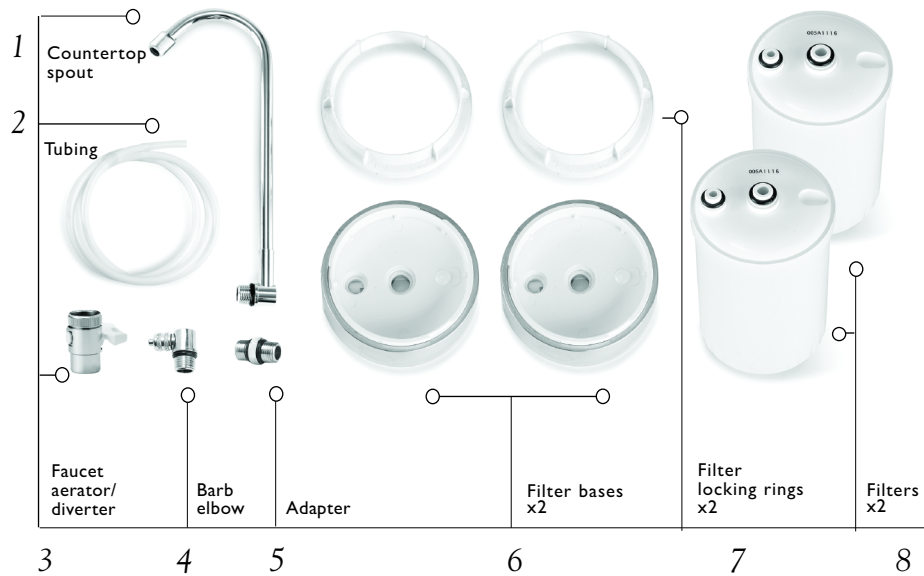
TO ACTIVATE THE SYSTEM



Turn on cold water.

While water is running, turn or pull the knob depending on the type of diverter valve.

Let water run through **AYRO™ HT plus** for at least 3-5 minutes to flush out any carbon dust and then enjoy your clean and great tasting alkaline antioxidant water.



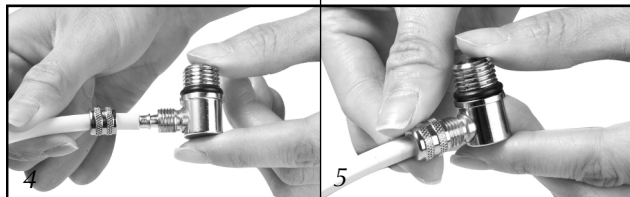
ASSEMBLING PARTS - BARB ELBOW



1
Turn the attachment ring counter-clockwise.

2
Detach from the barb elbow.

3
Slip the tubing into the attachment ring.



4
Connect the attachment ring with tubing attached to the barb elbow.

5
Turn the attachment ring clockwise.

6



4
Turn the filter locking ring counter-clockwise to detach from the filter base I.

5
Insert filter no.1 (sediment filter) firmly onto the filter base I.

6
Slip the filter locking ring over the filter cartridge. Turn the locking ring clockwise to secure the cartridge in place.

11



1
Turn the filter locking ring counter clockwise to detach from the filter base 2.

2
Insert filter no. 2 (alkaline antioxidant filter) firmly onto the filter base 2.

3
Slip the filter locking ring over the filter cartridge. Turn the locking ring clockwise to secure the cartridge in place.

ASSEMBLING PARTS - FAUCET DIVERTER



1
Turn the attachment ring counter-clockwise.

2
Detach from the faucet aerator /diverter.

3
Slip the other end of tubing into the attachment ring.

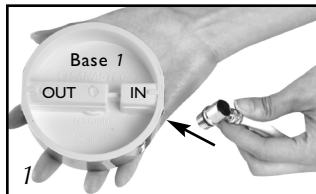


4
Connect the attachment ring with tubing attached to the faucet aerator/diverter.

5
Turn the attachment ring clockwise.

6
Complete assembling diverter set.

CONNECTION TO FILTER BASE
(INLET)

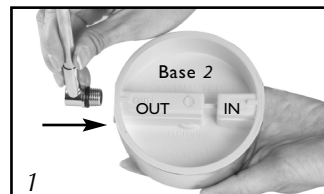


1
Connect the barb elbow with tubing attached to the inlet of filter base 1.



2
Complete installing barb elbow.

(OUTLET)



1
Connect the countertop spout to the outlet of filter base 2.



2
Complete installing countertop spout.

CONNECTING TWO FILTER BASES



1
Connect the adapter to the inlet of filter base 2.



2
Connect filter base 2 to filter base 1.



3
Completed connecting two filter bases.